

## Introducing the European Community for Housing Equality – *asking for your support*

### What is the European Community for Housing Equality?

The European Community for Housing Equality (ECHE) is a highly ambitious initiative. It will, for the first time, **bring together housing policymakers, practitioners, and ordinary households from across Europe** to discuss and analyse the main challenges that we face, and to co-create a set of innovative policy tools to help face up to these challenges.

Thus, the ECHE understands that we need **a multi-stakeholder approach to tackling housing inequalities**, and that a closer dialogue between European nations will be vital in better identifying the sources of such inequalities, as well as possible solutions.



### How will the ECHE work?

The ECHE will gather at least three housing ‘focal points’ (*i.e.*, *national experts*) from each of the EU-27 Member States and the four nations of the United Kingdom; with at least one focal point from each of the three stakeholder groups — policymakers, practitioners, and households — per nation. Thus, **the ECHE will include approximately 100 members**, unified by a desire to better understand current housing challenges, and to work collectively towards innovative solutions.

In order to facilitate this analysis and the development of possible policy options, the ECHE will be able to **call upon a multi-disciplinary group of housing scholars from across Europe**. This is within the context of the EU supported **EqualHouse** project<sup>1</sup>; the first time that Europe has funded a cross-border, comprehensive, and in-depth look at the issue of housing inequality.

The inputs and comments received from the members of **the ECHE will help to steer and guide the work of the EqualHouse scholars**, ensuring that their analysis is built upon clearly identified challenges and knowledge gaps, while also helping to bring forward new and innovative policy measures that could form the basis for solutions (*i.e.*, *the sharing of best practices between ECHE members*).

#### Key topics to be discussed and developed with the European Community for Housing Equality

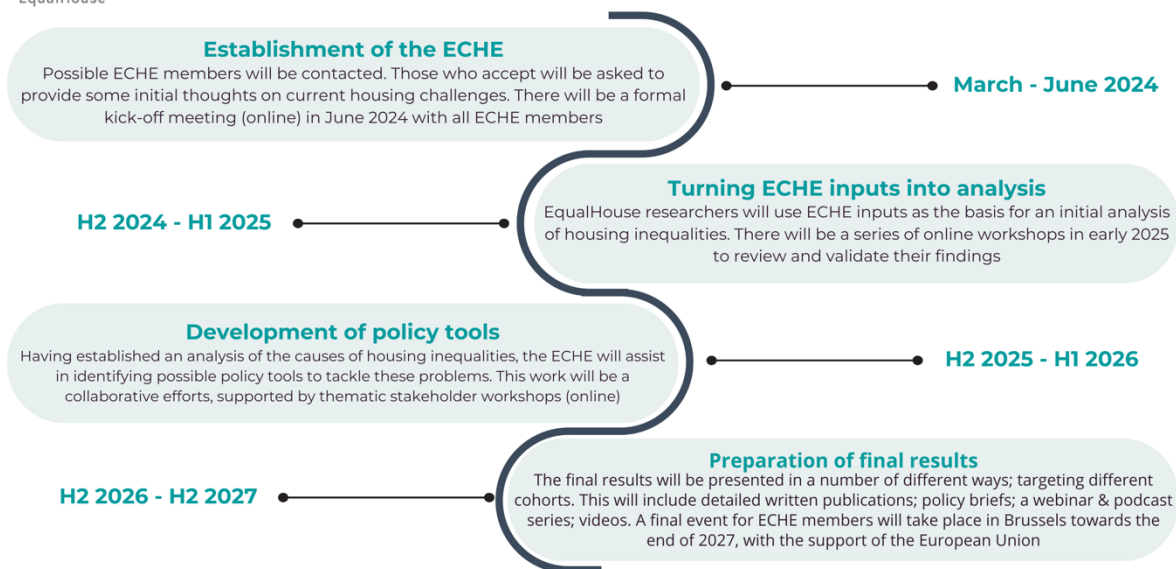
- Analysing Income, Wealth and Housing Inequalities and their Interrelationships
- Financial and Fiscal Influences on Housing Inequalities
- Using Subsidies, Regulation, Land and Services to Make Housing Affordable
- Socially Innovative & Community-led Solutions to Housing Inequalities
- Tackling Acute Housing Inequalities Among Refugees and Migrants
- Tackling Unsustainable Housing and Energy Poverty
- Links between labour markets and housing issues

<sup>1</sup> [cordis.europa.eu/project/id/101132325](https://cordis.europa.eu/project/id/101132325)

## Introducing the European Community for Housing Equality – *asking for your support*



### European Community for Housing Equality



### How can I participate and what can I gain?

In moving forward with the establishment of the European Community for Housing Equality, **it is important to be clear with regard to what is expected from members, but also the ways in which members can hopefully benefit** from their participation.

Inputs and asks of ECHE members	Outputs and benefits for ECHE members
<ul style="list-style-type: none"> <li>Provide written inputs outlining the current housing challenges or drivers of inequalities in your nation</li> <li>Provide written inputs on emerging housing policies/solutions that aim to tackle existing challenges</li> <li>Respond the requests for additional information/clarifications based on your written inputs</li> <li>Attend periodic online events, and critique the work of the EqualHouse scholars</li> </ul>	<ul style="list-style-type: none"> <li>Access to a newly developed housing (in)equality database; helping to support the development of better targeted policymaking</li> <li>Possibility to exchange and collaborate with housing experts in other European countries</li> <li>Possibility to co-create new research on housing challenges, to better inform policymaking in the coming years</li> <li>Invitations to exclusive online workshops, and webinars on housing, which are reserved for ECHE members</li> </ul>

While the current 'vision' of the ECHE is that it will run until the end of 2027, if there is the appetite and the interest from members, **the possibility to extend or expand its scope out past this point in time exists.**

### Summary

The European Community for Housing Equality is **a first-of-its-kind multi-stakeholder and pan-European initiative on housing**. Its goal is to bring together relevant focal points to direct and guide the work of the EqualHouse project, in order to work towards the larger objective of developing concrete policy options for tackling the crisis that impacts so much of the European housing sector. This recognises that the challenges being faced in one country are unlikely to be unique, and that **by collaborating across borders we can speed up the transmission and replication of emerging housing solutions.**